

## Proposal's title

**Consortium:** LITA (UE), LMQ (EGS), LMD (INR), CGCS (UT), FI (TUT)

**ANR:** Applicants are advised to use an easily readable document layout : A4 pages, Times 11 or equivalent, single spaced, 2cm margins, numbered pages.

**ANR:** The project description must contain a maximum of 20 pages (including Gantt chart, overview of the requested funds and bibliography related to the project) and must be submitted in an unprotected PDF format.

**ANR:** For the drafting of the proposal, it is necessary to refer to the evaluation criteria of the proposals available in the [Guide for applicants 2018](#).

### Summary table of persons involved in the project

**ANR:** Role & responsibilities in the project must be 4 lines at most.

**ANR:** Involvement concerns the project's total duration, and is expressed in person.month.

Partner	Last name	First name	Current position	Role & responsibilities	Involvement (pers.month)
Université de l'excellence	MARTIN	Stéphanie	MCF	Coordinator Leads WP 0 Inv. Tasks 1.2, 2.1, 3.1	36 p.m
École générale supérieure	ZANG	Jing	PR	Leads WP 1 Inv. Tasks 1.1, 1.2, 1.3	18 p.m
Institut national de la recherche	DIALA	Assa	MCF	Leader WP 2 Inv. Tasks 2.2, 2.3	18 p.m
Institut national de la recherche	MEUNIER	Richard	MCF	Leader WP 3 Inv. Tasks 2.1, 3.2	12 p.m
École générale supérieure	MANSOURI	Ahmet	PR	Inv. Tasks 3.1, 3.2	6 p.m
Université de l'excellence	GONZALES	Raoul	MCF HDR	Inv. Tasks 3.1, 3.2	6 p.m

**ANR:** If the project is an international collaborative research project (PRCI), replace the above table with:

Country	Partner	Last name	First name	Current position	Role & responsibilities	Involvement (pers.month)
...	...	...	...	...	...	...
Great Britain	University of Tadborough	WAKEFIELD	Doreen	MCF	Inv. Tasks 1.2, 1.3	18 p.m
Germany	Technische Universität Turmstadt	MÜLLER	Otto	PR	Inv. Tasks 3.1, 3.2	18 p.m

### Changes compared to the pre-proposal

**ANR:** Specify and justify any significant changes made since the drafting of the pre-proposal, in particular changes in requested grant amount, scientific and technological objectives and composition of the consortium.

**ANR: Reminder: eligibility criteria according to compliance with pre-proposal:** The full proposal must describe the same project as that described in the pre-proposal. The funding instrument and the scientific coordinator must be the same as for the pre-proposal. The relevance of other discrepancies will be assessed by panel members. If there is a significant deviation, the proposal is declared ineligible and cannot receive ANR funding.

Lorem ipsum dolor sit amet, consectetur adipiscing elit. Ut purus elit, vestibulum ut, placerat ac, adipiscing vitae, felis. Curabitur dictum gravida mauris. Nam arcu libero, nonummy eget, consectetur id, vulputate a, magna. Donec vehicula augue eu neque. Pellentesque habitant morbi tristique senectus et netus et malesuada fames ac turpis egestas. Mauris ut leo. Cras viverra metus rhoncus sem. Nulla et lectus vestibulum urna fringilla ultrices. Phasellus eu tellus sit amet tortor gravida placerat. Integer sapien est, iaculis in, pretium quis, viverra ac, nunc. Praesent eget sem vel leo ultrices bibendum. Aenean faucibus. Morbi dolor nulla, malesuada eu, pulvinar at, mollis ac, nulla. Curabitur auctor semper nulla. Donec varius orci eget risus. Duis nibh mi, congue eu, accumsan eleifend, sagittis quis, diam. Duis eget orci sit amet orci dignissim rutrum.

## I Proposal's context, positioning and objective(s)

Nam dui ligula, fringilla a, euismod sodales, sollicitudin vel, wisi. Morbi auctor lorem non justo. Nam lacus libero, pretium at, lobortis vitae, ultricies et, tellus. Donec aliquet, tortor sed accumsan bibendum, erat ligula aliquet magna, vitae ornare odio metus a mi. Morbi ac orci et nisl hendrerit mollis. Suspendisse ut massa. Cras nec ante. Pellentesque a nulla. Cum sociis natoque penatibus et magnis dis parturient montes, nascetur ridiculus mus. Aliquam tincidunt urna. Nulla ullamcorper vestibulum turpis. Pellentesque cursus luctus mauris.

### a Objectives and scientific hypotheses

**ANR:** Present the objectives and the research hypotheses ; present the scientific and technical barriers to be lifted ; present the expected results; if applicable describe any final products developed.

Nulla malesuada porttitor diam. Donec felis erat, congue non, volutpat at, tincidunt tristique, libero. Vivamus viverra fermentum felis. Donec nonummy pellentesque ante. Phasellus adipiscing semper elit. Proin fermentum massa ac quam. Sed diam turpis, molestie vitae, placerat a, molestie nec, leo. Maecenas lacinia. Nam ipsum ligula, eleifend at, accumsan nec, suscipit a, ipsum. Morbi blandit ligula feugiat magna. Nunc eleifend consequat lorem. Sed lacinia nulla vitae enim. Pellentesque tincidunt purus vel magna. Integer non enim. Praesent euismod nunc eu purus. Donec bibendum quam in tellus. Nullam cursus pulvinar lectus. Donec et mi. Nam vulputate metus eu enim. Vestibulum pellentesque felis eu massa.

### b Originality and relevance in relation to the state of the art

**ANR:** Emphasize the ambitious nature of the proposal and the novelty of the research in relation to the state of the art ; show the possible contributions of project partners to the state of the art ; present any preliminary results. In the case of a project proposal following up on previous project(s) already funded by ANR or by another body, provide a summary of the results achieved and clearly describe the new issues raised and the new objectives set out in the light of the earlier project.

Quisque ullamcorper placerat ipsum. Cras nibh. Morbi vel justo vitae lacus tincidunt ultrices. Lorem ipsum dolor sit amet, consectetur adipiscing elit. In hac habitasse platea dictumst. Integer tempus convallis augue. Etiam facilisis. Nunc elementum fermentum wisi. Aenean placerat. Ut imperdiet, enim sed gravida sollicitudin, felis odio placerat quam, ac pulvinar elit purus eget enim. Nunc vitae tortor. Proin tempus nibh sit amet nisl. Vivamus quis tortor vitae risus porta vehicula.

### b1 Whatever domain involved in the project

The bibliography is handled using *BibLaTeX* and *Biber*<sup>1</sup> instead of *BibTeX*, so no problems with diacritics. You do not have to change your *BibTeX* file, the syntax is the same.

Let's put a few citations for the example: [1–3]. I would recommend putting the URLs directly in the *BibTeX* file, to save space (cf. `anr_biblio.bib`).

### b2 Whatever other domain

Fusce mauris. Vestibulum luctus nibh at lectus. Sed bibendum, nulla a faucibus semper, leo velit ultricies tellus, ac venenatis arcu wisi vel nisl. Vestibulum diam. Aliquam pellentesque, augue quis sagittis posuere, turpis lacus congue quam, in hendrerit risus eros eget felis. Maecenas eget erat in sapien mattis porttitor. Vestibulum porttitor. Nulla facilisi. Sed a turpis eu lacus commodo facilisis. Morbi fringilla, wisi in dignissim interdum, justo lectus sagittis dui, et vehicula libero dui cursus dui. Mauris tempor ligula sed lacus. Duis cursus enim ut augue. Cras ac magna. Cras nulla. Nulla egestas. Curabitur a leo. Quisque egestas wisi eget nunc. Nam feugiat lacus vel est. Curabitur consectetur.

### b3 And a third domain related to the project

Suspendisse vel felis. Ut lorem lorem, interdum eu, tincidunt sit amet, laoreet vitae, arcu. Aenean faucibus pede eu ante. Praesent enim elit, rutrum at, molestie non, nonummy vel, nisl. Ut lectus eros, malesuada sit amet, fermentum eu, sodales cursus, magna. Donec eu purus. Quisque vehicula, urna sed ultricies auctor, pede lorem egestas dui, et convallis elit erat sed nulla. Donec luctus. Curabitur et nunc. Aliquam dolor odio, commodo pretium, ultricies non, pharetra in, velit. Integer arcu est, nonummy in, fermentum faucibus, egestas vel, odio.

## c Methodology and risk management

**ANR:** Describe the methods and technical decisions, risks and fall-back solutions envisaged.

We can put some floats here, as examples. A diagram such as the one in Figure 1, describing the general organization and the dependencies between the work packages, is likely to appear at some point. A table such as Table 1 can also be useful, or some equation like eq.(1).

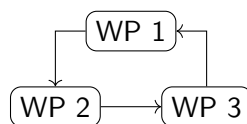


Figure 1. Some diagram representing the relations between the packages.

Sed commodo posuere pede. Mauris ut est. Ut quis purus. Sed ac odio. Sed vehicula hendrerit sem. Duis non odio. Morbi ut dui. Sed accumsan risus eget odio. In hac habitasse platea dictumst. Pellentesque non elit. Fusce sed justo eu urna porta tincidunt. Mauris felis odio, sollicitudin sed, volutpat a, ornare ac, erat. Morbi quis dolor. Donec pellentesque, erat ac sagittis semper, nunc dui lobortis purus, quis congue purus metus ultricies tellus. Proin et quam. Class aptent taciti sociosqu ad litora torquent per conubia nostra, per inceptos hymenaeos. Praesent sapien turpis, fermentum vel, eleifend faucibus, vehicula eu, lacus.

A	B	C	D
15,99	98,98	13,67	6,25
16,98	65,21	63,74	25,87
98,97	6,98	19,75	36,74
67,39	96,84	34,14	19,85

Table 1. Some example table.

<sup>1</sup>[https://en.wikipedia.org/wiki/Biber\\_\(LaTeX\)](https://en.wikipedia.org/wiki/Biber_(LaTeX))

Pellentesque habitant morbi tristique senectus et netus et malesuada fames ac turpis egestas. Donec odio elit, dictum in, hendrerit sit amet, egestas sed, leo. Praesent feugiat sapien aliquet odio. Integer vitae justo. Aliquam vestibulum fringilla lorem. Sed neque lectus, consectetur at, consectetur sed, eleifend ac, lectus. Nulla facilisi. Pellentesque eget lectus. Proin eu metus. Sed porttitor. In hac habitasse platea dictumst. Suspendisse eu lectus. Ut mi mi, lacinia sit amet, placerat et, mollis vitae, dui. Sed ante tellus, tristique ut, iaculis eu, malesuada ac, dui. Mauris nibh leo, facilisis non, adipiscing quis, ultrices a, dui.

$$y = f(x) \quad (1)$$

## II Project organization and means implemented

### a Scientific coordinator and its consortium / its team

**ANR: In the case of a collaborative research project (PRC, PRCE, PRCI):**

- Present scientific coordinator and his/her involvement : indicate scientific coordinator's experience and his / her role in the project (for each of the scientific coordinators from each individual country in the case of PRCI).
- Present the consortium and its complementarity : demonstrate the quality and complementary nature of the consortium precising the identity of the scientists involved and of their institution and all other items providing a framework for judging the quality and complementarity of partners and consortium.

**ANR: In the case of a Young Researchers Project (JCJC):**

- Present the scientific coordinator and his/her role in the project, present his/her position within the organization of the host laboratory.
- Present the scientific coordinator's team, its quality and complementarity.

The project MYPROJECT is coordinated by **Stéphanie MARTIN (LITA)**. It is organized in four technical WPs divided in tasks. Each WP is under the responsibility of a well-identified coordinator namely **Stéphanie MARTIN (LITA)** for WP 0, **Jing ZANG (LMQ)** for WP 1, **Assa DIALA (LMD)** for WP 2, and **Richard MEUNIER (LMD)** for WP 3.

**S. MARTIN** is blablabla at the **Laboratoire d'Informatique Théorique et Appliquée** with Université de l'excellence. Sed commodo posuere pede. Mauris ut est. Ut quis purus. Sed ac odio. Sed vehicula hendrerit sem. Duis non odio. Morbi ut dui. Sed accumsan risus eget odio. In hac habitasse platea dictumst. Pellentesque non elit. Fusce sed justo eu urna porta tincidunt. Mauris felis odio, sollicitudin sed, volutpat a, ornare ac, erat. Morbi quis dolor. Donec pellentesque, erat ac sagittis semper, nunc dui lobortis purus, quis congue purus metus ultricies tellus. Proin et quam. Class aptent taciti sociosqu ad litora torquent per conubia nostra, per inceptos hymenaeos. Praesent sapien turpis, fermentum vel, eleifend faucibus, vehicula eu, lacus.

Beside the coordination (WP 0), she will be involved in WP 1, 2 and 3.

**J. ZANG** is the leader of WP 1. He is bla bla bla at the **Laboratoire de Métaphysique Quantique** with École générale supérieure. Nam dui ligula, fringilla a, euismod sodales, sollicitudin vel, wisi. Morbi auctor lorem non justo. Nam lacus libero, pretium at, lobortis vitae, ultricies et, tellus. Donec aliquet, tortor sed accumsan bibendum, erat ligula aliquet magna, vitae ornare odio metus a mi. Morbi ac orci et nisl hendrerit mollis. Suspendisse ut massa. Cras nec ante. Pellentesque a nulla. Cum sociis natoque penatibus et magnis dis parturient montes, nascetur ridiculus mus. Aliquam tincidunt urna. Nulla ullamcorper vestibulum turpis. Pellentesque cursus luctus mauris.

He will participate in all tasks of WP 1.

**A. DIALA** is the leader of WP 2. She is bla bla bla at the **Laboratoire de Mathématiques Discrètes** with Institut national de la recherche. Pellentesque habitant morbi tristique senectus et netus et malesuada fames ac turpis egestas. Donec odio elit, dictum in, hendrerit sit amet, egestas sed, leo. Praesent feugiat sapien aliquet odio. Integer vitae justo. Aliquam vestibulum fringilla lorem. Sed neque lectus, consectetur at,

consectetur sed, eleifend ac, lectus. Nulla facilisi. Pellentesque eget lectus. Proin eu metus. Sed porttitor. In hac habitasse platea dictumst. Suspendisse eu lectus. Ut mi mi, lacinia sit amet, placerat et, mollis vitae, dui. Sed ante tellus, tristique ut, iaculis eu, malesuada ac, dui. Mauris nibh leo, facilisis non, adipiscing quis, ultrices a, dui.

He will work on several tasks of WP 2.

**R. MEUNIER** is the leader of WP 3. He is bla bla bla at the **Laboratoire de Mathématiques Discrètes** with Institut national de la recherche. Morbi luctus, wisi viverra faucibus pretium, nibh est placerat odio, nec commodo wisi enim eget quam. Quisque libero justo, consectetur a, feugiat vitae, porttitor eu, libero. Suspendisse sed mauris vitae elit sollicitudin malesuada. Maecenas ultricies eros sit amet ante. Ut venenatis velit. Maecenas sed mi eget dui varius euismod. Phasellus aliquet volutpat odio. Vestibulum ante ipsum primis in faucibus orci luctus et ultrices posuere cubilia Curae; Pellentesque sit amet pede ac sem eleifend consectetur. Nullam elementum, urna vel imperdiet sodales, elit ipsum pharetra ligula, ac pretium ante justo a nulla. Curabitur tristique arcu eu metus. Vestibulum lectus. Proin mauris. Proin eu nunc eu urna hendrerit faucibus. Aliquam auctor, pede consequat laoreet varius, eros tellus scelerisque quam, pellentesque hendrerit ipsum dolor sed augue. Nulla nec lacus.

He will work on WP 2 and 3.

The other project members are: **A. MANSOURI** (Professor at **Laboratoire de Métaphysique Quantique** with École générale supérieure), he has a strong expertise in bla bla bla bla. He will be involved in Tasks 3.1 and 3.2.

**R. GONZALES** (Associate Professor at the **Laboratoire d'Informatique Théorique et Appliquée** with the Université de l'excellence), he is specialized in bla bla bla. He will participate in Tasks 3.1 and 3.2.

**D. WAKEFIELD** (Assistant Professor at the **Center for Great Computer Science** with the University of Tadborough), a specialist of blablabla bla blabla blabla. She will take part in Tasks 1.2 and 1.3. .

**O. MÜLLER** (Professor at the **Forschungszentrum für Informatik** with Technische Universität Turmstadt), he works on bla bla bla bla. He will participate in Tasks 3.1 and 3.2.

## b Means of achieving the objectives

**ANR:** Set out the scientific programme and justify the work programme's task breakdown with regard to the objectives being pursued:

- For each task, describe the objectives, the work programme, deliverables, partners' contributions, methods and technical decisions, risks, and fall-back solutions.
- For research projects dealing with subjects that may harm humans, animals, or the environment, discuss the ethical aspects of the project.
- Illustrate the programme with a Gantt chart.

**ANR:** Describe the means (those previously available and those requested) to achieve the objectives:

- **Scientific and technical justification of the requested means** – per item of expenditure and by partner -, linked to the objectives of the proposal. Summarise the funding request in the table below in accordance with the information filled out on the website and with ANR's grant allocation rules ([règlement relatif aux modalités d'attribution des aides de l'ANR](#) ).
- Description of the context in terms of human and financial resources available thanks to previous or ongoing projects.
- If applicable, indicate the conditions of access to a very large research infrastructure (TGIR).

**ANR: Concerning PRCI proposals**, it is mandatory for applicants to provide the following information in the scientific document:

- The scientific contribution of the foreign teams;
- Presentation of the foreign scientific coordinator;
- Financial data, broken down by item of each expenditure by foreign partners.

## Work Package 0: Project Management

**Leader:** S. MARTIN (LITA)

Nulla malesuada porttitor diam. Donec felis erat, congue non, volutpat at, tincidunt tristique, libero. Vivamus viverra fermentum felis. Donec nonummy pellentesque ante. Phasellus adipiscing semper elit. Proin fermentum massa ac quam. Sed diam turpis, molestie vitae, placerat a, molestie nec, leo. Maecenas lacinia. Nam ipsum ligula, eleifend at, accumsan nec, suscipit a, ipsum. Morbi blandit ligula feugiat magna. Nunc eleifend consequat lorem. Sed lacinia nulla vitae enim. Pellentesque tincidunt purus vel magna. Integer non enim. Praesent euismod nunc eu purus. Donec bibendum quam in tellus. Nullam cursus pulvinar lectus. Donec et mi. Nam vulputate metus eu enim. Vestibulum pellentesque felis eu massa.

**Deliverables:** bla bla bla bla.

## Work Package 1: Data Retrieval

**Leader:** J. ZANG (LMQ)

Quisque ullamcorper placerat ipsum. Cras nibh. Morbi vel justo vitae lacus tincidunt ultrices. Lorem ipsum dolor sit amet, consectetur adipiscing elit. In hac habitasse platea dictumst. Integer tempus convallis augue. Etiam facilisis. Nunc elementum fermentum wisi. Aenean placerat. Ut imperdiet, enim sed gravida sollicitudin, felis odio placerat quam, ac pulvinar elit purus eget enim. Nunc vitae tortor. Proin tempus nibh sit amet nisl. Vivamus quis tortor vitae risus porta vehicula.

### Task 1.1: Some task

Nulla malesuada porttitor diam. Donec felis erat, congue non, volutpat at, tincidunt tristique, libero. Vivamus viverra fermentum felis. Donec nonummy pellentesque ante. Phasellus adipiscing semper elit. Proin fermentum massa ac quam. Sed diam turpis, molestie vitae, placerat a, molestie nec, leo. Maecenas lacinia. Nam ipsum ligula, eleifend at, accumsan nec, suscipit a, ipsum. Morbi blandit ligula feugiat magna. Nunc eleifend consequat lorem. Sed lacinia nulla vitae enim. Pellentesque tincidunt purus vel magna. Integer non enim. Praesent euismod nunc eu purus. Donec bibendum quam in tellus. Nullam cursus pulvinar lectus. Donec et mi. Nam vulputate metus eu enim. Vestibulum pellentesque felis eu massa.

### Task 1.2: Some other task

Fusce mauris. Vestibulum luctus nibh at lectus. Sed bibendum, nulla a faucibus semper, leo velit ultricies tellus, ac venenatis arcu wisi vel nisl. Vestibulum diam. Aliquam pellentesque, augue quis sagittis posuere, turpis lacus congue quam, in hendrerit risus eros eget felis. Maecenas eget erat in sapien mattis porttitor. Vestibulum porttitor. Nulla facilisi. Sed a turpis eu lacus commodo facilisis. Morbi fringilla, wisi in dignissim interdum, justo lectus sagittis dui, et vehicula libero dui cursus dui. Mauris tempor ligula sed lacus. Duis cursus enim ut augue. Cras ac magna. Cras nulla. Nulla egestas. Curabitur a leo. Quisque egestas wisi eget nunc. Nam feugiat lacus vel est. Curabitur consectetur.

### Task 1.3: Last task of this WP

Suspendisse vel felis. Ut lorem lorem, interdum eu, tincidunt sit amet, laoreet vitae, arcu. Aenean faucibus pede eu ante. Praesent enim elit, rutrum at, molestie non, nonummy vel, nisl. Ut lectus eros, malesuada sit amet, fermentum eu, sodales cursus, magna. Donec eu purus. Quisque vehicula, urna sed ultricies auctor, pede lorem egestas dui, et convallis elit erat sed nulla. Donec luctus. Curabitur et nunc. Aliquam dolor odio, commodo pretium, ultricies non, pharetra in, velit. Integer arcu est, nonummy in, fermentum faucibus, egestas vel, odio.

**Deliverables:** some reports.

**Success indicators:** scientific publications.

**Partners involved:** LMQ, LITA, CGCS.

## Work Package 2: Classification methods

**Leader:** A. DIALA (LMD)

Sed commodo posuere pede. Mauris ut est. Ut quis purus. Sed ac odio. Sed vehicula hendrerit sem. Duis non odio. Morbi ut dui. Sed accumsan risus eget odio. In hac habitasse platea dictumst. Pellentesque non elit. Fusce sed justo eu urna porta tincidunt. Mauris felis odio, sollicitudin sed, volutpat a, ornare ac, erat. Morbi quis dolor. Donec pellentesque, erat ac sagittis semper, nunc dui lobortis purus, quis congue

purus metus ultricies tellus. Proin et quam. Class aptent taciti sociosqu ad litora torquent per conubia nostra, per inceptos hymenaeos. Praesent sapien turpis, fermentum vel, eleifend faucibus, vehicula eu, lacus.

#### **Task 2.1: First task of this WP**

Pellentesque habitant morbi tristique senectus et netus et malesuada fames ac turpis egestas. Donec odio elit, dictum in, hendrerit sit amet, egestas sed, leo. Praesent feugiat sapien aliquet odio. Integer vitae justo. Aliquam vestibulum fringilla lorem. Sed neque lectus, consectetur at, consectetur sed, eleifend ac, lectus. Nulla facilisi. Pellentesque eget lectus. Proin eu metus. Sed porttitor. In hac habitasse platea dictumst. Suspendisse eu lectus. Ut mi mi, lacinia sit amet, placerat et, mollis vitae, dui. Sed ante tellus, tristique ut, iaculis eu, malesuada ac, dui. Mauris nibh leo, facilisis non, adipiscing quis, ultrices a, dui.

#### **Task 2.2: Another task**

Morbi luctus, wisi viverra faucibus pretium, nibh est placerat odio, nec commodo wisi enim eget quam. Quisque libero justo, consectetur a, feugiat vitae, porttitor eu, libero. Suspendisse sed mauris vitae elit sollicitudin malesuada. Maecenas ultricies eros sit amet ante. Ut venenatis velit. Maecenas sed mi eget dui varius euismod. Phasellus aliquet volutpat odio. Vestibulum ante ipsum primis in faucibus orci luctus et ultrices posuere cubilia Curae; Pellentesque sit amet pede ac sem eleifend consectetur. Nullam elementum, urna vel imperdiet sodales, elit ipsum pharetra ligula, ac pretium ante justo a nulla. Curabitur tristique arcu eu metus. Vestibulum lectus. Proin mauris. Proin eu nunc eu urna hendrerit faucibus. Aliquam auctor, pede consequat laoreet varius, eros tellus scelerisque quam, pellentesque hendrerit ipsum dolor sed augue. Nulla nec lacus.

#### **Task 2.3: Yet another task**

Suspendisse vitae elit. Aliquam arcu neque, ornare in, ullamcorper quis, commodo eu, libero. Fusce sagittis erat at erat tristique mollis. Maecenas sapien libero, molestie et, lobortis in, sodales eget, dui. Morbi ultrices rutrum lorem. Nam elementum ullamcorper leo. Morbi dui. Aliquam sagittis. Nunc placerat. Pellentesque tristique sodales est. Maecenas imperdiet lacinia velit. Cras non urna. Morbi eros pede, suscipit ac, varius vel, egestas non, eros. Praesent malesuada, diam id pretium elementum, eros sem dictum tortor, vel consectetur odio sem sed wisi.

**Deliverables:** some reports.

**Success indicators:** scientific publications.

**Partners involved:** LMD, LMQ.

### **Work Package 3: Experimental validation**

**Leader:** R. MEUNIER (LMD)

Sed feugiat. Cum sociis natoque penatibus et magnis dis parturient montes, nascetur ridiculus mus. Ut pellentesque augue sed urna. Vestibulum diam eros, fringilla et, consectetur eu, nonummy id, sapien. Nullam at lectus. In sagittis ultrices mauris. Curabitur malesuada erat sit amet massa. Fusce blandit. Aliquam erat volutpat. Aliquam euismod. Aenean vel lectus. Nunc imperdiet justo nec dolor.

#### **Task 3.1: Yet another task**

Etiam euismod. Fusce facilisis lacinia dui. Suspendisse potenti. In mi erat, cursus id, nonummy sed, ullamcorper eget, sapien. Praesent pretium, magna in eleifend egestas, pede pede pretium lorem, quis consectetur tortor sapien facilisis magna. Mauris quis magna varius nulla scelerisque imperdiet. Aliquam non quam. Aliquam porttitor quam a lacus. Praesent vel arcu ut tortor cursus volutpat. In vitae pede quis diam bibendum placerat. Fusce elementum convallis neque. Sed dolor orci, scelerisque ac, dapibus nec, ultricies ut, mi. Duis nec dui quis leo sagittis commodo.

#### **Task 3.2: Just two tasks in this WP**

Aliquam lectus. Vivamus leo. Quisque ornare tellus ullamcorper nulla. Mauris porttitor pharetra tortor. Sed fringilla justo sed mauris. Mauris tellus. Sed non leo. Nullam elementum, magna in cursus sodales, augue est scelerisque sapien, venenatis congue nulla arcu et pede. Ut suscipit enim vel sapien. Donec congue. Maecenas urna mi, suscipit in, placerat ut, vestibulum ut, massa. Fusce ultrices nulla et nisl.

**Deliverables:** some reports.

**Success indicators:** scientific publications.

Partners involved: LMD, LMQ, LITA, FI.

**Task schedule**

Table 2 shows the list of deliverables of the project, while Figure 2 presents the chronology of the WPs and tasks.

Delivery date	WP	Item	Title	Nature
$t_0$	0	WS0	Project Website	Website
$t_0 + 3$	0	R0.1	Post-meeting report	Short report
$t_0 + 9$	1	W1	International workshop	Workshop
$t_0 + 15$	0	R0.2	Post-meeting report	Short report
$t_0 + 18$	1	W2	Great symposium	Workshop
$t_0 + 21$	1	R1.1	Mid-term report on the data	Technical report
$t_0 + 21$	2	R2.1	Mid-term report on the classification methods	Technical report
$t_0 + 21$	2	R2.2	Mid-term report on the experiments	Technical report
$t_0 + 24$	0	R0.3	Post-meeting report	Short report
$t_0 + 33$	2	AP1	Tool prototype	Software
$t_0 + 36$	3	WS1	Finalized tool and Webapp	Software
$t_0 + 36$	3	R3.1	Documentation of the software	Technical report
$t_0 + 36$	3	R3.2	Final report	Technical report

Table 2. Task Schedule of the project.

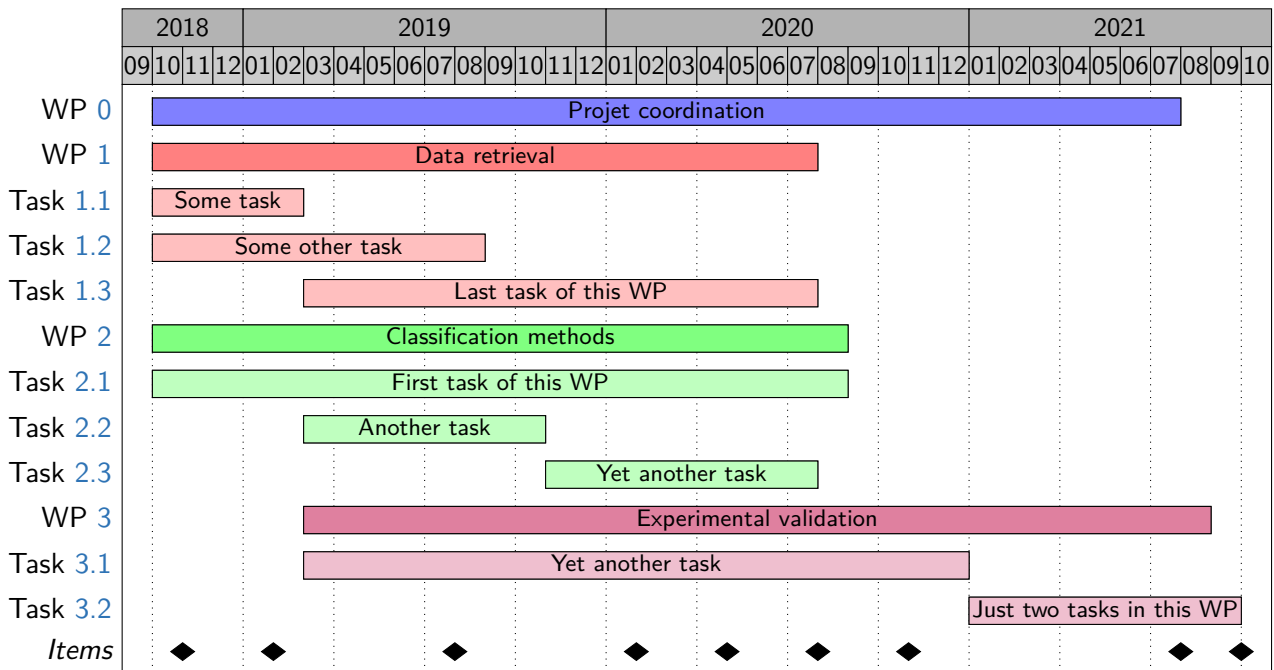


Figure 2. Gantt Diagram of the project.

**Requested means by item of expenditure and by partner**

Suspendisse vitae elit. Aliquam arcu neque, ornare in, ullamcorper quis, commodo eu, libero. Fusce sagittis erat at erat tristique mollis. Maecenas sapien libero, molestie et, lobortis in, sodales eget, dui. Morbi ultrices rutrum lorem. Nam elementum ullamcorper leo. Morbi dui. Aliquam sagittis. Nunc placerat. Pellentesque tristique sodales est. Maecenas imperdiet lacinia velit. Cras non urna. Morbi eros pede,



suscipit ac, varius vel, egestas non, eros. Praesent malesuada, diam id pretium elementum, eros sem dictum tortor, vel consetetur odio sem sed wisi.

### Laboratoire d'Informatique Théorique et Appliquée

Sed feugiat. Cum sociis natoque penatibus et magnis dis parturient montes, nascetur ridiculus mus. Ut pellentesque augue sed urna. Vestibulum diam eros, fringilla et, consetetur eu, nonummy id, sapien. Nullam at lectus. In sagittis ultrices mauris. Curabitur malesuada erat sit amet massa. Fusce blandit. Aliquam erat volutpat. Aliquam euismod. Aenean vel lectus. Nunc imperdiet justo nec dolor.

**Equipment** Etiam euismod. Fusce facilisis lacinia dui. Suspendisse potenti. In mi erat, cursus id, nonummy sed, ullamcorper eget, sapien. Praesent pretium, magna in eleifend egestas, pede pede pretium lorem, quis consetetur tortor sapien facilisis magna. Mauris quis magna varius nulla scelerisque imperdiet. Aliquam non quam. Aliquam porttitor quam a lacus. Praesent vel arcu ut tortor cursus volutpat. In vitae pede quis diam bibendum placerat. Fusce elementum convallis neque. Sed dolor orci, scelerisque ac, dapibus nec, ultricies ut, mi. Duis nec dui quis leo sagittis commodo.

**Staff** Aliquam lectus. Vivamus leo. Quisque ornare tellus ullamcorper nulla. Mauris porttitor pharetra tortor. Sed fringilla justo sed mauris. Mauris tellus. Sed non leo. Nullam elementum, magna in cursus sodales, augue est scelerisque sapien, venenatis congue nulla arcu et pede. Ut suscipit enim vel sapien. Donec congue. Maecenas urna mi, suscipit in, placerat ut, vestibulum ut, massa. Fusce ultrices nulla et nisl.

**Operating costs** Etiam ac leo a risus tristique nonummy. Donec dignissim tincidunt nulla. Vestibulum rhoncus molestie odio. Sed lobortis, justo et pretium lobortis, mauris turpis condimentum augue, nec ultricies nibh arcu pretium enim. Nunc purus neque, placerat id, imperdiet sed, pellentesque nec, nisl. Vestibulum imperdiet neque non sem accumsan laoreet. In hac habitasse platea dictumst. Etiam condimentum facilisis libero. Suspendisse in elit quis nisl aliquam dapibus. Pellentesque auctor sapien. Sed egestas sapien nec lectus. Pellentesque vel dui vel neque bibendum viverra. Aliquam porttitor nisl nec pede. Proin mattis libero vel turpis. Donec rutrum mauris et libero. Proin euismod porta felis. Nam lobortis, metus quis elementum commodo, nunc lectus elementum mauris, eget vulputate ligula tellus eu neque. Vivamus eu dolor.

### Laboratoire de Métaphysique Quantique

Nulla in ipsum. Praesent eros nulla, congue vitae, euismod ut, commodo a, wisi. Pellentesque habitant morbi tristique senectus et netus et malesuada fames ac turpis egestas. Aenean nonummy magna non leo. Sed felis erat, ullamcorper in, dictum non, ultricies ut, lectus. Proin vel arcu a odio lobortis euismod. Vestibulum ante ipsum primis in faucibus orci luctus et ultrices posuere cubilia Curae; Proin ut est. Aliquam odio. Pellentesque massa turpis, cursus eu, euismod nec, tempor congue, nulla. Duis viverra gravida mauris. Cras tincidunt. Curabitur eros ligula, varius ut, pulvinar in, cursus faucibus, augue.

**Equipment** Nulla mattis luctus nulla. Duis commodo velit at leo. Aliquam vulputate magna et leo. Nam vestibulum ullamcorper leo. Vestibulum condimentum rutrum mauris. Donec id mauris. Morbi molestie justo et pede. Vivamus eget turpis sed nisl cursus tempor. Curabitur mollis sapien condimentum nunc. In wisi nisl, malesuada at, dignissim sit amet, lobortis in, odio. Aenean consequat arcu a ante. Pellentesque porta elit sit amet orci. Etiam at turpis nec elit ultricies imperdiet. Nulla facilisi. In hac habitasse platea dictumst. Suspendisse viverra aliquam risus. Nullam pede justo, molestie nonummy, scelerisque eu, facilisis vel, arcu.

**Staff** Curabitur tellus magna, porttitor a, commodo a, commodo in, tortor. Donec interdum. Praesent scelerisque. Maecenas posuere sodales odio. Vivamus metus lacus, varius quis, imperdiet quis, rhoncus a, turpis. Etiam ligula arcu, elementum a, venenatis quis, sollicitudin sed, metus. Donec nunc pede, tincidunt in, venenatis vitae, faucibus vel, nibh. Pellentesque wisi. Nullam malesuada. Morbi ut tellus ut pede tincidunt porta. Lorem ipsum dolor sit amet, consetetur adipiscing elit. Etiam congue neque id dolor.

**Operating costs** Donec et nisl at wisi luctus bibendum. Nam interdum tellus ac libero. Sed sem justo, laoreet vitae, fringilla at, adipiscing ut, nibh. Maecenas non sem quis tortor eleifend fermentum. Etiam id tortor ac mauris porta vulputate. Integer porta neque vitae massa. Maecenas tempus libero a libero posuere dictum. Vestibulum ante ipsum primis in faucibus orci luctus et ultrices posuere cubilia Curae; Aenean quis mauris sed elit commodo placerat. Class aptent taciti sociosqu ad litora torquent per conubia nostra, per inceptos hymenaeos. Vivamus rhoncus tincidunt libero. Etiam elementum pretium justo. Vivamus est. Morbi a tellus eget pede tristique commodo. Nulla nisl. Vestibulum sed nisl eu sapien cursus rutrum.

### Laboratoire de Mathématiques Discrètes

Nulla non mauris vitae wisi posuere convallis. Sed eu nulla nec eros scelerisque pharetra. Nullam varius. Etiam dignissim elementum metus. Vestibulum faucibus, metus sit amet mattis rhoncus, sapien dui laoreet odio, nec ultricies nibh augue a enim. Fusce in ligula. Quisque at magna et nulla commodo consequat. Proin accumsan imperdiet sem. Nunc porta. Donec feugiat mi at justo. Phasellus facilisis ipsum quis ante. In ac elit eget ipsum pharetra faucibus. Maecenas viverra nulla in massa.

**Equipment** Nulla ac nisl. Nullam urna nulla, ullamcorper in, interdum sit amet, gravida ut, risus. Aenean ac enim. In luctus. Phasellus eu quam vitae turpis viverra pellentesque. Duis feugiat felis ut enim. Phasellus pharetra, sem id porttitor sodales, magna nunc aliquet nibh, nec blandit nisl mauris at pede. Suspendisse risus risus, lobortis eget, semper at, imperdiet sit amet, quam. Quisque scelerisque dapibus nibh. Nam enim. Lorem ipsum dolor sit amet, consectetur adipiscing elit. Nunc ut metus. Ut metus justo, auctor at, ultrices eu, sagittis ut, purus. Aliquam aliquam.

**Staff** Etiam pede massa, dapibus vitae, rhoncus in, placerat posuere, odio. Vestibulum luctus commodo lacus. Morbi lacus dui, tempor sed, euismod eget, condimentum at, tortor. Phasellus aliquet odio ac lacus tempor faucibus. Praesent sed sem. Praesent iaculis. Cras rhoncus tellus sed justo ullamcorper sagittis. Donec quis orci. Sed ut tortor quis tellus euismod tincidunt. Suspendisse congue nisl eu elit. Aliquam tortor diam, tempus id, tristique eget, sodales vel, nulla. Praesent tellus mi, condimentum sed, viverra at, consectetur quis, lectus. In auctor vehicula orci. Sed pede sapien, euismod in, suscipit in, pharetra placerat, metus. Vivamus commodo dui non odio. Donec et felis.

**Operating costs** Etiam suscipit aliquam arcu. Aliquam sit amet est ac purus bibendum congue. Sed in eros. Morbi non orci. Pellentesque mattis lacinia elit. Fusce molestie velit in ligula. Nullam et orci vitae nibh vulputate auctor. Aliquam eget purus. Nulla auctor wisi sed ipsum. Morbi porttitor tellus ac enim. Fusce ornare. Proin ipsum enim, tincidunt in, ornare venenatis, molestie a, augue. Donec vel pede in lacus sagittis porta. Sed hendrerit ipsum quis nisl. Suspendisse quis massa ac nibh pretium cursus. Sed sodales. Nam eu neque quis pede dignissim ornare. Maecenas eu purus ac urna tincidunt congue.

	Partner LITA (UE)	Partner LMQ (EGS)	Partner LMD (INR)	Partner CGCS (UT)	Partner FI (TUT)
Staff expenses	250 000€	100 000€	200 000€	75 000€	100 000€
Instruments and material costs	5 000€	7 500€	3 000€	9 000€	6 000€
Building and ground costs	3 000€	98 000€	0€	0€	0€
Outsourcing / subcontracting	0€	0€	0€	11 000€	7 000€
Travel costs	8 000€	6 500€	12 345€	5 000€	11 000€
Administrative & structure costs	100€	10€	150€	30€	2€
<b>Sub-total</b>	<b>266 100€</b>	<b>212 010€</b>	<b>215 495€</b>	<b>100 030€</b>	<b>124 002€</b>
<b>Requested</b>	<b>917 637€</b>				

**ANR:** The amounts indicated here must be strictly identical to those entered on the website. If both information are not consistent, if they were badly filled in or lacking, the information entered online will prevail on those reported in the submission form / scientific document.

**ANR: Instruments and material costs:** include scientific consumables.

**ANR: Administrative management & structure costs:** For marginal cost beneficiaries (mostly public partners), these costs will be a package of 8% of the eligible expenses. For full cost beneficiaries (mostly private partners), these costs will be a sum of max. 68% of staff expenses and max. 7% of other expenses.

### III Impact and benefits of the project

#### a Dissemination and exploitation of the results

**ANR:** Describe the dissemination and/or exploitation strategy envisaged.

Lorem ipsum dolor sit amet, consectetur adipiscing elit. Ut purus elit, vestibulum ut, placerat ac, adipiscing vitae, felis. Curabitur dictum gravida mauris. Nam arcu libero, nonummy eget, consectetur id, vulputate a, magna. Donec vehicula augue eu neque. Pellentesque habitant morbi tristique senectus et netus et malesuada fames ac turpis egestas. Mauris ut leo. Cras viverra metus rhoncus sem. Nulla et lectus vestibulum urna fringilla ultrices. Phasellus eu tellus sit amet tortor gravida placerat. Integer sapien est, iaculis in, pretium quis, viverra ac, nunc. Praesent eget sem vel leo ultrices bibendum. Aenean faucibus. Morbi dolor nulla, malesuada eu, pulvinar at, mollis ac, nulla. Curabitur auctor semper nulla. Donec varius orci eget risus. Duis nibh mi, congue eu, accumsan eleifend, sagittis quis, diam. Duis eget orci sit amet orci dignissim rutrum.

#### b Impact and positioning within the ANR programme

**ANR:** Describe how the results of the project address an ANR 2018 work programme challenge or theme; specify in what field(s) (scientific, economic, social or cultural) the results of the project may have an impact.

**ANR: In the case of an international collaborative research project (PRCI):** specify the balance between the scientific contributions of the respective partners in each country and the added value/benefit for France of European or international cooperation.

**ANR: In the case of a collaborative research project involving enterprises (PRCE):** specify any action of technology and innovation transfer with regard to the social and economic world.

**ANR: In the case of a collaborative research project (PRC):** specify the strategy for disseminating and exploiting the result.

**ANR: In the case of a Young Researchers project (JCJC):** specify the project's capacity to promote the development of a topic or the young researcher's own team.

Nam dui ligula, fringilla a, euismod sodales, sollicitudin vel, wisi. Morbi auctor lorem non justo. Nam lacus libero, pretium at, lobortis vitae, ultricies et, tellus. Donec aliquet, tortor sed accumsan bibendum, erat ligula aliquet magna, vitae ornare odio metus a mi. Morbi ac orci et nisl hendrerit mollis. Suspendisse ut massa. Cras nec ante. Pellentesque a nulla. Cum sociis natoque penatibus et magnis dis parturient montes, nascetur ridiculus mus. Aliquam tincidunt urna. Nulla ullamcorper vestibulum turpis. Pellentesque cursus luctus mauris.

### References

- [1] R. Agrawal, T. Imieliński, and A. Swami. "Mining association rules between sets of items in large databases". In: *ACM SIGMOD International Conference on Management of data*. 1993, pp. 207–216.
- [2] J. Pearl. *Probabilistic Reasoning in Intelligent Systems: Networks of Plausible Inference*. Morgan Kaufmann, 1988.
- [3] L. A. Zadeh. "Fuzzy sets". In: *Information and Control* 8.3 (1965), pp. 338–353.

**ANR:** The bibliography must be included in the scientific document to be submitted, **not in an appendix**.