

# MYCOBACTERIUM TUBERCULOSIS

## WHOLE GENOME SEQUENCING REPORT

NOT FOR DIAGNOSTIC USE



See <https://github.com/amcrisan/TB-WGS-MicroReport> for how to automatically fill the contents of this template

Patient Name	JOHN DOE	Patient ID	12345678910
Birth Date	2000-01-01	Location	SOMEPLACE
Sample Type	SPUTUM	Sample Date	2016-12-25
Reporting Lab	LAB NAME	Report Date/Time	2017-01-01, 15:36
Requested By	REQUESTER NAME	Requester Contact	REQUESTER@EMAIL.COM

### Summary

The specimen was positive for **Mycobacterium tuberculosis**. It is **resistant to isoniazid and rifampin**. It belongs to a cluster, suggesting **recent transmission**.

### Organism

The specimen was positive for **Mycobacterium tuberculosis**

### Drug Susceptibility

Drug susceptibility is predicted by the presence of mutations known to confer drug resistance in *M. tuberculosis*.

- No drug resistance predicted
- Mono-resistance predicted
- Multi-drug resistance predicted
- Extensive drug resistance predicted

Drug class	Prediction	Drug	Resistance Gene (Amino Acid Mutation)
First Line	Sensitive	Ethambutol	No resistance mutation detected
		Pyrazinimide	No resistance mutation detected
	Resistant	Isoniazid	katG (S315T)
		Rifampin	rpoB (S531L)
Second Line	Sensitive	Streptomycin	No resistance mutation detected
		Ciprofloxacin	No resistance mutation detected
		Ofloxacin	No resistance mutation detected
		Moxifloacin	No resistance mutation detected
		Amikacin	No resistance mutation detected
		Kanamycin	No resistance mutation detected
		Capreomycin	No resistance mutation detected

# MYCOBACTERIUM TUBERCULOSIS WHOLE GENOME SEQUENCING REPORT

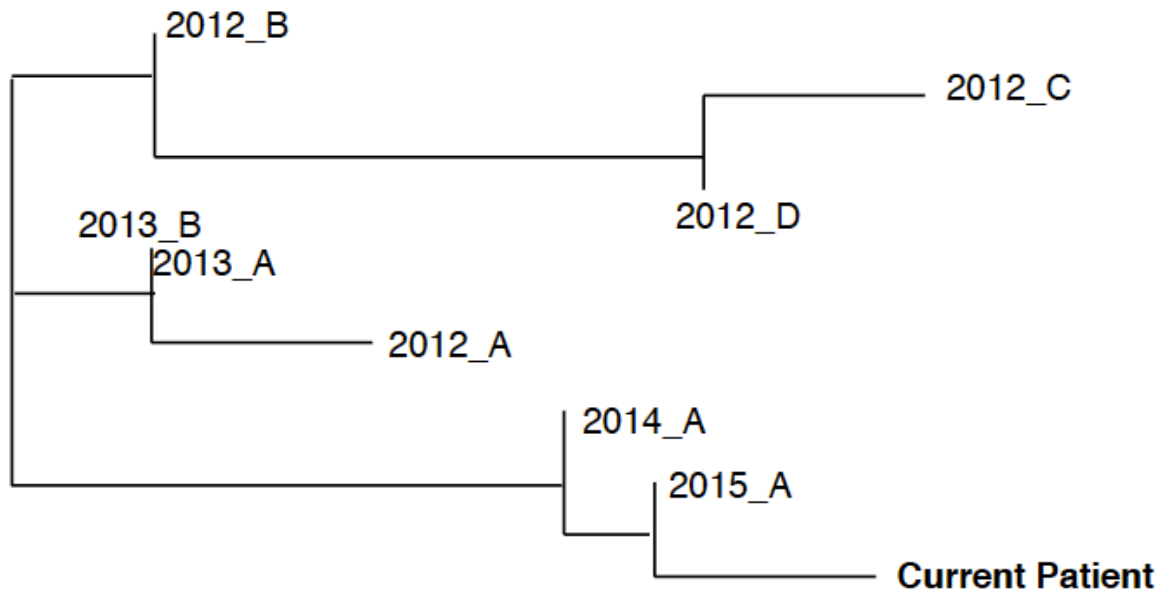
NOT FOR DIAGNOSTIC USE



## Cluster Detection

The current isolate was clustered with previously sequenced isolates, suggesting **recent transmission**.

Relatedness	Number of prior matching isolates
Closely Related (< 5 mutations apart)	2 isolates
Related (6 to 30 mutations apart)	6 isolates



## Comments

No additional comments

## Authorised

Signature	Name
Position	Date