

**Thesis Title Thesis Title Thesis Title Thesis Title**

Ph.D. Viva Voce Presentation



**Your Name**

Under the Supervision of

**Supervisor Name**

**Indian Institute of Technology Bombay**

Transportation Systems Engineering

Department of Civil Engineering

March 1, 2023

Introduction

Literature Review

Study Objectives

Study Methodology

Exploratory Data Analysis

Modeling

Results

Study Conclusions, Contributions, and Practical Implications

Research Plan

References

# Introduction

---

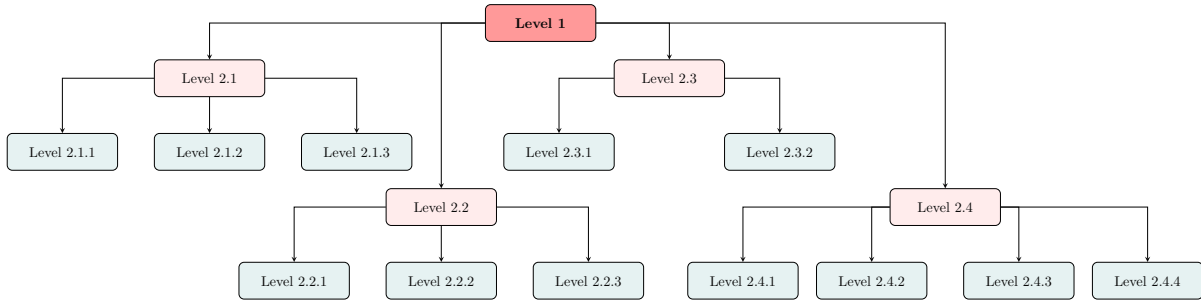
## Statistics

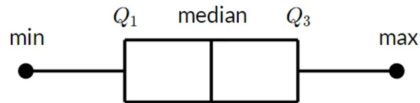
- ▶ 22% Lorem ipsum dolor sit amet, consectetur adipiscing elit. In eget mauris eu ipsum viverra sollicitudin. Proin risus lorem, commodo [1].
- ▶ Lorem ipsum dolor sit amet, 200 fgggrg and amet, consectetur adipiscing elit amet, consectetur adipiscing elit lorem [2].

- ▶ amet, consectetur 2011 amet, consectetur adipiscing amet, consectetur amet, consectetur 55% amet, consectetur 14 amet, consectetur [3]
- ▶ Vivamus turpis Mauris id dapibus sem. Vivamus turpis ipsum, sodales vitae velit in, consectetur ultricies sem [4].

# Literature Review

---





Description of a boxplot

“Pellentesque luctus tellus gravida velit accumsan interdum. Ut consectetur, metus sed euismod cursus, enim lorem” – Source [draft]

- ▶ Lorem ipsum dolor sit amet, Lorem ipsum dolor sit amet, Lorem ipsum dolor sit amet
- ▶ Lorem ipsum dolor sit amet is hiLorem ipsum dolor sit amet Lorem ipsum dolor sit amet.



## Section Title

---

Author's Name	Study Characteristics	Variables Used	Analysis Approach
Tiwari et al. (2007) [2], India	Observational (O); N = 827	Var1, Var2, Var3, Var4, Var5, Var6, Var7, Var8, Var9	SA
Rothman et al. (2015) [5], Canada	Observational (Q); N = 733	Var1, Var2, Var3, Var4, Var5, Var6, Var7, Var8, Var9	EDA

**Note:** O: Observational Study; Q: Questionnaire Survey Study;

SA: Survival Analysis; EDA: Exploratory Data Analysis

Next Section Title

---

Author's Name	Study Characteristics	Variables Used	Analysis Approach
W.H.O (2018) [1]	Report (R)	Var1, Var2, Var3, Var4, Var5, Var6, Var7, Var8, Var9	-
Koh et al. (2014) [3], Singapore	Observational (O); N = 104	Var1, Var2, Var3, Var4, Var5, Var6, Var7, Var8, Var9	BLR

**Note:** O: Observational Study; R: Report;

BLR: Binary Logistic Regression

- ▶ **Fusce pulvinar congue arcu, tempor efficitur** for **Fusce pulvinar congue arcu, tempor efficitur**.
- ▶ Fusce pulvinar congue arcu, tempor efficitur purus aliquam sed. **Fusce pulvinar congue arcu, tempor efficitur purus aliquam sed.**

## Study Objectives

---

**Objective I:** Vestibulum ante ipsum primis in faucibus orci luctus et ultrices.

**Objective II:** Vestibulum ante ipsum primis in faucibus orci luctus et ultrices  
posuere cubilia curae; Cras malesuada urna arcu, vestibulum dictum  
mi mattis id. Integer rutrum commodo velit eu consequat.

**Objective III:** Mi mattis id. Integer rutrum commodo velit eu consequat.

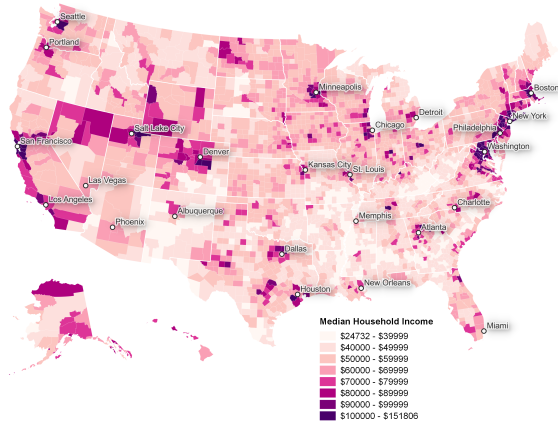
# Study Methodology

---





## Median household income by county (2019)



Data Source: US Department of Agriculture

Source: Example map created by author using QGIS software.



# Exploratory Data Analysis

---



# Modeling

---



# Results

---





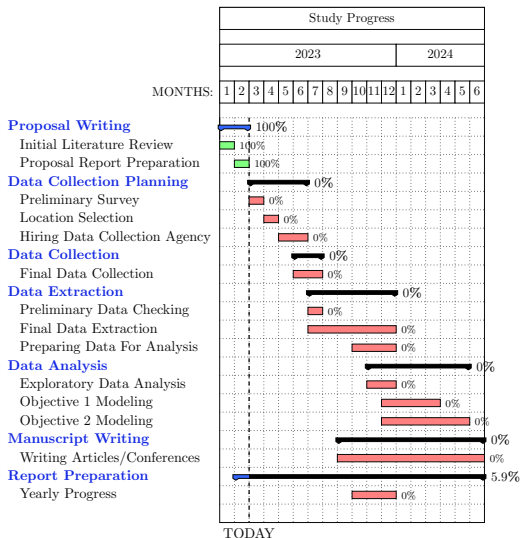
# Study Conclusions, Contributions, and Practical Implications

---









- [1] WORLD HEALTH ORGANIZATION, “GLOBAL STATUS REPORT ON ROAD SAFETY,” W.H.O, TECH. REP., 2018. [ONLINE]. AVAILABLE: [WWW.WHO.INT](http://WWW.WHO.INT)
- [2] G. TIWARI, S. BANGDIWALA, A. SARASWAT, AND S. GAURAV, “SURVIVAL ANALYSIS: PEDESTRIAN RISK EXPOSURE AT SIGNALIZED INTERSECTIONS,” *Transportation research part F: traffic psychology and behaviour*, VOL. 10, NO. 2, PP. 77–89, 2007.
- [3] P. KOH AND Y. WONG, “GAP ACCEPTANCE OF VIOLATORS AT SIGNALISED PEDESTRIAN CROSSINGS,” *Accident Analysis & Prevention*, VOL. 62, PP. 178–185, 2014.
- [4] Q. HUSSAIN, W. K. ALHAJYASEEN, A. PIRDAVANI, K. BRIJS, K. SHAABAN, AND T. BRIJS, “DO DETECTION-BASED WARNING STRATEGIES IMPROVE VEHICLE YIELDING BEHAVIOR AT UNCONTROLLED MIDBLOCK CROSSWALKS?” *Accident Analysis & Prevention*, VOL. 157, P. 106166, 2021.
- [5] L. ROTHMAN, R. BULIUNG, T. TO, C. MACARTHUR, A. MACPHERSON, AND A. HOWARD, “ASSOCIATIONS BETWEEN PARENTS’ PERCEPTION OF TRAFFIC DANGER, THE BUILT ENVIRONMENT AND WALKING TO SCHOOL,” *Journal of Transport & Health*, VOL. 2, NO. 3, PP. 327–335, 2015.

“If you have knowledge, let others  
light their candles in it.”

Margaret Fuller

Thank You!