
Submission and Formatting Instructions for International Conference on Machine Learning (ICML 2019)

Anonymous Authors¹

Abstract

This document provides a basic paper template and submission guidelines. Abstracts must be a single paragraph, ideally between 4–6 sentences long. Gross violations will trigger corrections at the camera-ready phase.

1. Electronic Submission

Submission to ICML 2019 will be entirely electronic, via a web site (not email). Information about the submission process and L^AT_EX templates are available on the conference web site at:

<http://icml.cc/>

The guidelines below will be enforced for initial submissions and camera-ready copies. Here is a brief summary:

- Submissions must be in PDF.
- The maximum paper length is **8 pages excluding references and acknowledgements, and 12 pages including references and acknowledgements** (pages 9 through 12 must contain only references and acknowledgements).
- **Do not include author information or acknowledgements** in your initial submission.
- Your paper should be in **10 point Times font**.
- Make sure your PDF file only uses Type-1 fonts.
- Place figure captions *under* the figure (and omit titles from inside the graphic file itself). Place table captions *over* the table.

¹Anonymous Institution, Anonymous City, Anonymous Region, Anonymous Country. Correspondence to: Anonymous Author <anon.email@domain.com>.

Preliminary work. Under review by the International Conference on Machine Learning (ICML). Do not distribute.

- References must include page numbers whenever possible and be as complete as possible. Place multiple citations in chronological order.
- Do not alter the style template; in particular, do not compress the paper format by reducing the vertical spaces.
- Keep your abstract brief and self-contained, one paragraph and roughly 4–6 sentences. Gross violations will require correction at the camera-ready phase. The title should have content words capitalized.

1.1. Submitting Papers

Paper Deadline: The deadline for paper submission that is advertised on the conference website is strict. If your full, anonymized, submission does not reach us on time, it will not be considered for publication. There is no separate abstract submission.

Anonymous Submission: ICML uses double-blind review: no identifying author information may appear on the title page or in the paper itself. Section 2.3 gives further details.

Simultaneous Submission: ICML will not accept any paper which, at the time of submission, is under review for another conference or has already been published. This policy also applies to papers that overlap substantially in technical content with conference papers under review or previously published. ICML submissions must not be submitted to other conferences during ICML's review period. Authors may submit to ICML substantially different versions of journal papers that are currently under review by the journal, but not yet accepted at the time of submission. Informal publications, such as technical reports or papers in workshop proceedings which do not appear in print, do not fall under these restrictions.

Authors must provide their manuscripts in **PDF** format. Furthermore, please make sure that files contain only embedded Type-1 fonts (e.g., using the program `pdfonts` in linux or using File/DocumentProperties/Fonts in Acrobat). Other fonts (like Type-3) might come from graphics files imported into the document.

055 Authors using **Word** must convert their document to PDF.
 056 Most of the latest versions of Word have the facility to do
 057 this automatically. Submissions will not be accepted in
 058 Word format or any format other than PDF. Really. We're
 059 not joking. Don't send Word.

060 Those who use **L^AT_EX** should avoid including Type-3 fonts.
 061 Those using `latex` and `dvips` may need the following
 062 two commands:

```
064 dvips -Ppdf -tletter -G0 -o paper.ps paper.dvi
065 ps2pdf paper.ps
```

067 It is a zero following the “-G”, which tells `dvips` to use the
 068 `config.pdf` file. Newer **T_EX** distributions don't always need
 069 this option.

070 Using `pdflatex` rather than `latex`, often gives better
 071 results. This program avoids the Type-3 font problem, and
 072 supports more advanced features in the `microtype` pack-
 073 age.

075 **Graphics files** should be a reasonable size, and included
 076 from an appropriate format. Use vector formats (`.eps/.pdf`)
 077 for plots, lossless bitmap formats (`.png`) for raster graphics
 078 with sharp lines, and `jpeg` for photo-like images.

079 The style file uses the `hyperref` package to make click-
 080 able links in documents. If this causes problems for you,
 081 add `nohyperref` as one of the options to the `icml2019`
 082 `usepackage` statement.

084 1.2. Submitting Final Camera-Ready Copy

086 The final versions of papers accepted for publication should
 087 follow the same format and naming convention as initial
 088 submissions, except that author information (names and af-
 089 filiations) should be given. See Section 2.3.2 for formatting
 090 instructions.

092 The footnote, “Preliminary work. Under review by the
 093 International Conference on Machine Learning (ICML). Do
 094 not distribute.” must be modified to “*Proceedings of the*
 095 *36th International Conference on Machine Learning*, Long
 096 Beach, USA, 2019. Copyright 2019 by the author(s).”

097 For those using the **L^AT_EX** style file, this change (and
 098 others) is handled automatically by simply changing
 099 `\usepackage{icml2019}` to

```
101 \usepackage[accepted]{icml2019}
```

103 Authors using **Word** must edit the footnote on the first page
 104 of the document themselves.

105 Camera-ready copies should have the title of the paper as
 106 running head on each page except the first one. The running
 107 title consists of a single line centered above a horizontal rule
 108 which is 1 point thick. The running head should be centered,
 109

bold and in 9 point type. The rule should be 10 points
 above the main text. For those using the **L^AT_EX** style file, the
 original title is automatically set as running head using the
`fancyhdr` package which is included in the ICML 2019
 style file package. In case that the original title exceeds the
 size restrictions, a shorter form can be supplied by using

```
\icmltitlerunning{...}
```

just before `\begin{document}`. Authors using **Word** must
 edit the header of the document themselves.

2. Format of the Paper

All submissions must follow the specified format.

2.1. Length and Dimensions

Papers must not exceed eight (8) pages, including all fig-
 ures, tables, and appendices, but excluding references and
 acknowledgements. When references and acknowledgements
 are included, the paper must not exceed ten (10)
 pages. Acknowledgements should be limited to grants and
 people who contributed to the paper. Any submission that
 exceeds this page limit, or that diverges significantly from
 the specified format, will be rejected without review.

The text of the paper should be formatted in two columns,
 with an overall width of 6.75 inches, height of 9.0 inches,
 and 0.25 inches between the columns. The left margin
 should be 0.75 inches and the top margin 1.0 inch (2.54 cm).
 The right and bottom margins will depend on whether you
 print on US letter or A4 paper, but all final versions must be
 produced for US letter size.

The paper body should be set in 10 point type with a vertical
 spacing of 11 points. Please use Times typeface throughout
 the text.

2.2. Title

The paper title should be set in 14 point bold type and
 centered between two horizontal rules that are 1 point thick,
 with 1.0 inch between the top rule and the top edge of the
 page. Capitalize the first letter of content words and put the
 rest of the title in lower case.

2.3. Author Information for Submission

ICML uses double-blind review, so author information
 must not appear. If you are using **L^AT_EX** and the
`icml2019.sty` file, use `\icmlauthor{...}` to spec-
 ify authors and `\icmlaffiliation{...}` to specify
 affiliations. (Read the TeX code used to produce this doc-
 ument for an example usage.) The author information will
 not be printed unless `accepted` is passed as an argument
 to the style file. Submissions that include the author infor-

mation will not be reviewed.

2.3.1. SELF-CITATIONS

If you are citing published papers for which you are an author, refer to yourself in the third person. In particular, do not use phrases that reveal your identity (e.g., “in previous work (Langley, 2000), we have shown ...”).

Do not anonymize citations in the reference section. The only exception are manuscripts that are not yet published (e.g., under submission). If you choose to refer to such unpublished manuscripts (Author, 2018), anonymized copies have to be submitted as Supplementary Material via CMT. However, keep in mind that an ICML paper should be self contained and should contain sufficient detail for the reviewers to evaluate the work. In particular, reviewers are not required to look at the Supplementary Material when writing their review.

2.3.2. CAMERA-READY AUTHOR INFORMATION

If a paper is accepted, a final camera-ready copy must be prepared. For camera-ready papers, author information should start 0.3 inches below the bottom rule surrounding the title. The authors’ names should appear in 10 point bold type, in a row, separated by white space, and centered. Author names should not be broken across lines. Unbolded superscripted numbers, starting 1, should be used to refer to affiliations.

Affiliations should be numbered in the order of appearance. A single footnote block of text should be used to list all the affiliations. (Academic affiliations should list Department, University, City, State/Region, Country. Similarly for industrial affiliations.)

Each distinct affiliations should be listed once. If an author has multiple affiliations, multiple superscripts should be placed after the name, separated by thin spaces. If the authors would like to highlight equal contribution by multiple first authors, those authors should have an asterisk placed after their name in superscript, and the term “*Equal contribution” should be placed in the footnote block ahead of the list of affiliations. A list of corresponding authors and their emails (in the format Full Name <email@domain.com>) can follow the list of affiliations. Ideally only one or two names should be listed.

A sample file with author names is included in the ICML2019 style file package. Turn on the [accepted] option to the stylefile to see the names rendered. All of the guidelines above are implemented by the L^AT_EX style file.

2.4. Abstract

The paper abstract should begin in the left column, 0.4 inches below the final address. The heading ‘Abstract’ should be centered, bold, and in 11 point type. The abstract body should use 10 point type, with a vertical spacing of 11 points, and should be indented 0.25 inches more than normal on left-hand and right-hand margins. Insert 0.4 inches of blank space after the body. Keep your abstract brief and self-contained, limiting it to one paragraph and roughly 4–6 sentences. Gross violations will require correction at the camera-ready phase.

2.5. Partitioning the Text

You should organize your paper into sections and paragraphs to help readers place a structure on the material and understand its contributions.

2.5.1. SECTIONS AND SUBSECTIONS

Section headings should be numbered, flush left, and set in 11 pt bold type with the content words capitalized. Leave 0.25 inches of space before the heading and 0.15 inches after the heading.

Similarly, subsection headings should be numbered, flush left, and set in 10 pt bold type with the content words capitalized. Leave 0.2 inches of space before the heading and 0.13 inches afterward.

Finally, subsection headings should be numbered, flush left, and set in 10 pt small caps with the content words capitalized. Leave 0.18 inches of space before the heading and 0.1 inches after the heading.

Please use no more than three levels of headings.

2.5.2. PARAGRAPHS AND FOOTNOTES

Within each section or subsection, you should further partition the paper into paragraphs. Do not indent the first line of a given paragraph, but insert a blank line between succeeding ones.

You can use footnotes¹ to provide readers with additional information about a topic without interrupting the flow of the paper. Indicate footnotes with a number in the text where the point is most relevant. Place the footnote in 9 point type at the bottom of the column in which it appears. Precede the first footnote in a column with a horizontal rule of 0.8 inches.²

¹Footnotes should be complete sentences.

²Multiple footnotes can appear in each column, in the same order as they appear in the text, but spread them across columns and pages if possible.

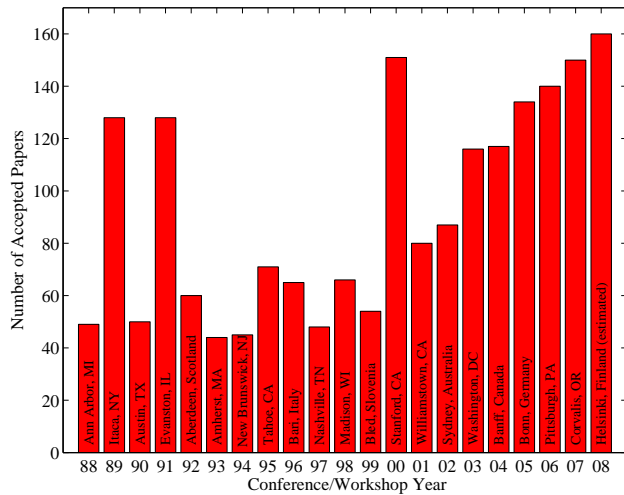


Figure 1. Historical locations and number of accepted papers for International Machine Learning Conferences (ICML 1993 – ICML 2008) and International Workshops on Machine Learning (ML 1988 – ML 1992). At the time this figure was produced, the number of accepted papers for ICML 2008 was unknown and instead estimated.

2.6. Figures

You may want to include figures in the paper to illustrate your approach and results. Such artwork should be centered, legible, and separated from the text. Lines should be dark and at least 0.5 points thick for purposes of reproduction, and text should not appear on a gray background.

Label all distinct components of each figure. If the figure takes the form of a graph, then give a name for each axis and include a legend that briefly describes each curve. Do not include a title inside the figure; instead, the caption should serve this function.

Number figures sequentially, placing the figure number and caption *after* the graphics, with at least 0.1 inches of space before the caption and 0.1 inches after it, as in Figure 1. The figure caption should be set in 9 point type and centered unless it runs two or more lines, in which case it should be flush left. You may float figures to the top or bottom of a column, and you may set wide figures across both columns (use the environment `figure*` in \LaTeX). Always place two-column figures at the top or bottom of the page.

2.7. Algorithms

If you are using \LaTeX , please use the “algorithm” and “algorithmic” environments to format pseudocode. These require the corresponding stylefiles, `algorithm.sty` and `algorithmic.sty`, which are supplied with this package. Algorithm 1 shows an example.

Algorithm 1 Bubble Sort

```

Input: data  $x_i$ , size  $m$ 
repeat
  Initialize  $noChange = true$ .
  for  $i = 1$  to  $m - 1$  do
    if  $x_i > x_{i+1}$  then
      Swap  $x_i$  and  $x_{i+1}$ 
       $noChange = false$ 
    end if
  end for
until  $noChange$  is  $true$ 

```

Table 1. Classification accuracies for naive Bayes and flexible Bayes on various data sets.

DATA SET	NAIVE	FLEXIBLE	BETTER?
BREAST	95.9 ± 0.2	96.7 ± 0.2	✓
CLEVELAND	83.3 ± 0.6	80.0 ± 0.6	×
GLASS2	61.9 ± 1.4	83.8 ± 0.7	✓
CREDIT	74.8 ± 0.5	78.3 ± 0.6	×
HORSE	73.3 ± 0.9	69.7 ± 1.0	×
META	67.1 ± 0.6	76.5 ± 0.5	✓
PIMA	75.1 ± 0.6	73.9 ± 0.5	×
VEHICLE	44.9 ± 0.6	61.5 ± 0.4	✓

2.8. Tables

You may also want to include tables that summarize material. Like figures, these should be centered, legible, and numbered consecutively. However, place the title *above* the table with at least 0.1 inches of space before the title and the same after it, as in Table 1. The table title should be set in 9 point type and centered unless it runs two or more lines, in which case it should be flush left.

Tables contain textual material, whereas figures contain graphical material. Specify the contents of each row and column in the table’s topmost row. Again, you may float tables to a column’s top or bottom, and set wide tables across both columns. Place two-column tables at the top or bottom of the page.

2.9. Citations and References

Please use APA reference format regardless of your formatter or word processor. If you rely on the \LaTeX bibliographic facility, use `natbib.sty` and `icml2019.bst` included in the style-file package to obtain this format.

Citations within the text should include the authors’ last names and year. If the authors’ names are included in the sentence, place only the year in parentheses, for example when referencing Arthur Samuel’s pioneering work (1959). Otherwise place the entire reference in parentheses with the authors and year separated by a comma (Samuel, 1959). List

multiple references separated by semicolons (Kearns, 1989; Samuel, 1959; Mitchell, 1980). Use the ‘et al.’ construct only for citations with three or more authors or after listing all authors to a publication in an earlier reference (Michalski et al., 1983).

Authors should cite their own work in the third person in the initial version of their paper submitted for blind review. Please refer to Section 2.3 for detailed instructions on how to cite your own papers.

Use an unnumbered first-level section heading for the references, and use a hanging indent style, with the first line of the reference flush against the left margin and subsequent lines indented by 10 points. The references at the end of this document give examples for journal articles (Samuel, 1959), conference publications (Langley, 2000), book chapters (Newell & Rosenbloom, 1981), books (Duda et al., 2000), edited volumes (Michalski et al., 1983), technical reports (Mitchell, 1980), and dissertations (Kearns, 1989).

Alphabetize references by the surnames of the first authors, with single author entries preceding multiple author entries. Order references for the same authors by year of publication, with the earliest first. Make sure that each reference includes all relevant information (e.g., page numbers).

Please put some effort into making references complete, presentable, and consistent. If using bibtex, please protect capital letters of names and abbreviations in titles, for example, use {B}ayesian or {L}ipschitz in your .bib file.

2.10. Software and Data

We strongly encourage the publication of software and data with the camera-ready version of the paper whenever appropriate. This can be done by including a URL in the camera-ready copy. However, do not include URLs that reveal your institution or identity in your submission for review. Instead, provide an anonymous URL or upload the material as “Supplementary Material” into the CMT reviewing system. Note that reviewers are not required to look at this material when writing their review.

Acknowledgements

Do not include acknowledgements in the initial version of the paper submitted for blind review.

If a paper is accepted, the final camera-ready version can (and probably should) include acknowledgements. In this case, please place such acknowledgements in an unnumbered section at the end of the paper. Typically, this will include thanks to reviewers who gave useful comments, to colleagues who contributed to the ideas, and to funding agencies and corporate sponsors that provided financial support.

References

- Author, N. N. Suppressed for anonymity, 2018.
- Duda, R. O., Hart, P. E., and Stork, D. G. *Pattern Classification*. John Wiley and Sons, 2nd edition, 2000.
- Kearns, M. J. *Computational Complexity of Machine Learning*. PhD thesis, Department of Computer Science, Harvard University, 1989.
- Langley, P. Crafting papers on machine learning. In Langley, P. (ed.), *Proceedings of the 17th International Conference on Machine Learning (ICML 2000)*, pp. 1207–1216, Stanford, CA, 2000. Morgan Kaufmann.
- Michalski, R. S., Carbonell, J. G., and Mitchell, T. M. (eds.). *Machine Learning: An Artificial Intelligence Approach, Vol. I*. Tioga, Palo Alto, CA, 1983.
- Mitchell, T. M. The need for biases in learning generalizations. Technical report, Computer Science Department, Rutgers University, New Brunswick, MA, 1980.
- Newell, A. and Rosenbloom, P. S. Mechanisms of skill acquisition and the law of practice. In Anderson, J. R. (ed.), *Cognitive Skills and Their Acquisition*, chapter 1, pp. 1–51. Lawrence Erlbaum Associates, Inc., Hillsdale, NJ, 1981.
- Samuel, A. L. Some studies in machine learning using the game of checkers. *IBM Journal of Research and Development*, 3(3):211–229, 1959.

A. Do not have an appendix here

Do not put content after the references. Put anything that you might normally include after the references in a separate supplementary file.

We recommend that you build supplementary material in a separate document. If you must create one PDF and cut it up, please be careful to use a tool that doesn’t alter the margins, and that doesn’t aggressively rewrite the PDF file. pdftk usually works fine.

Please do not use Apple’s preview to cut off supplementary material. In previous years it has altered margins, and created headaches at the camera-ready stage.